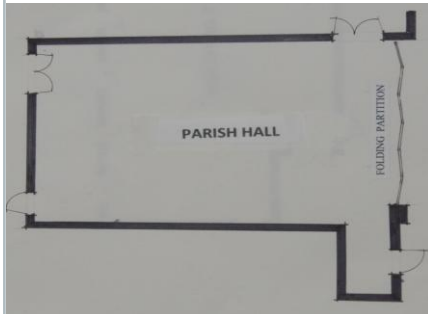


Parish Hall 1st Floor

Handicap Accessible

1260 sq. ft.
46.2ft. x 40.9ft.
Approx. Capacity 115

**Bridal Showers, Parties,
Repasts, etc**

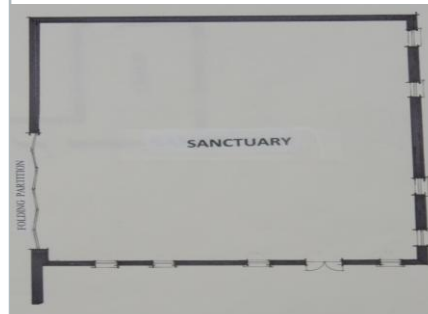


Sanctuary 1st Floor

Handicap Accessible

1,885 sq. ft.
34.5 ft x 27.9 ft
Approx. Capacity 170

**Weddings, Funerals and
Worship. etc.**



Meade Memorial Episcopal Church

Rental Space Available in Old Town Alexandria

322 North Alfred St.
Alexandria, VA 22314
Office: 703-549-1334
Fax: 703-549-2175

www.meadchurch.org
office@meadechurch.org

The Very Reverend
Collins E. Asonye, Rector

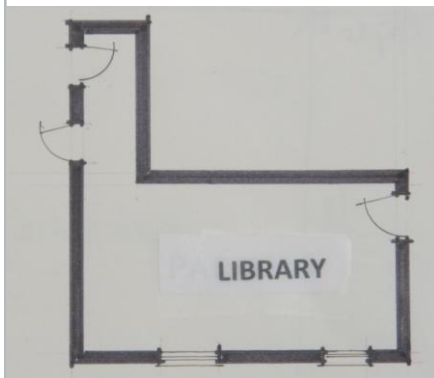


Library 2nd Floor

Not Handicap Accessible

260 Sq. Ft.
22.0 ft x 11.0 ft
Approx Capacity 15

**Small Private Meetings
Meditations & Counseling etc.**



About Meade

Meade Memorial Episcopal Church was established in 1869 as a Mission of nearby Christ Church. The original church building consisted of one room, without running water, and was warmed by a hand-fired coal furnace. In 1955 with some funding provided by the Dioceses of Virginia, the congregation added a parish hall, kitchen and clergy apartment, central heat and indoor plumbing. More than thirty years later the congregation decided to expand the building in order to welcome more worshippers. Paying homage to Meade's history, much of the old church was incorporated into the new church. The cross that stands boldly in black granite supported the center of the old church. It serves as a reminder of the "firm foundation" on which Meade was built. The outside walls are adorned with boldly colored, stained glass windows that reflect the people of God and the rich heritage of the congregation. For over 140 years, Meade has dedicated itself to the community through its ministry and community outreach projects. Over the years Meade has serviced the spiritual, nutritional, clothing and financial needs of the community.

Parish Hall 2nd Floor

Not Handicap Accessible

1,344 Square Feet
34.5 ft x 27.9 ft
Approx Capacity 120

**Conferences, Parties, &
Wedding Receptions, etc.**

